

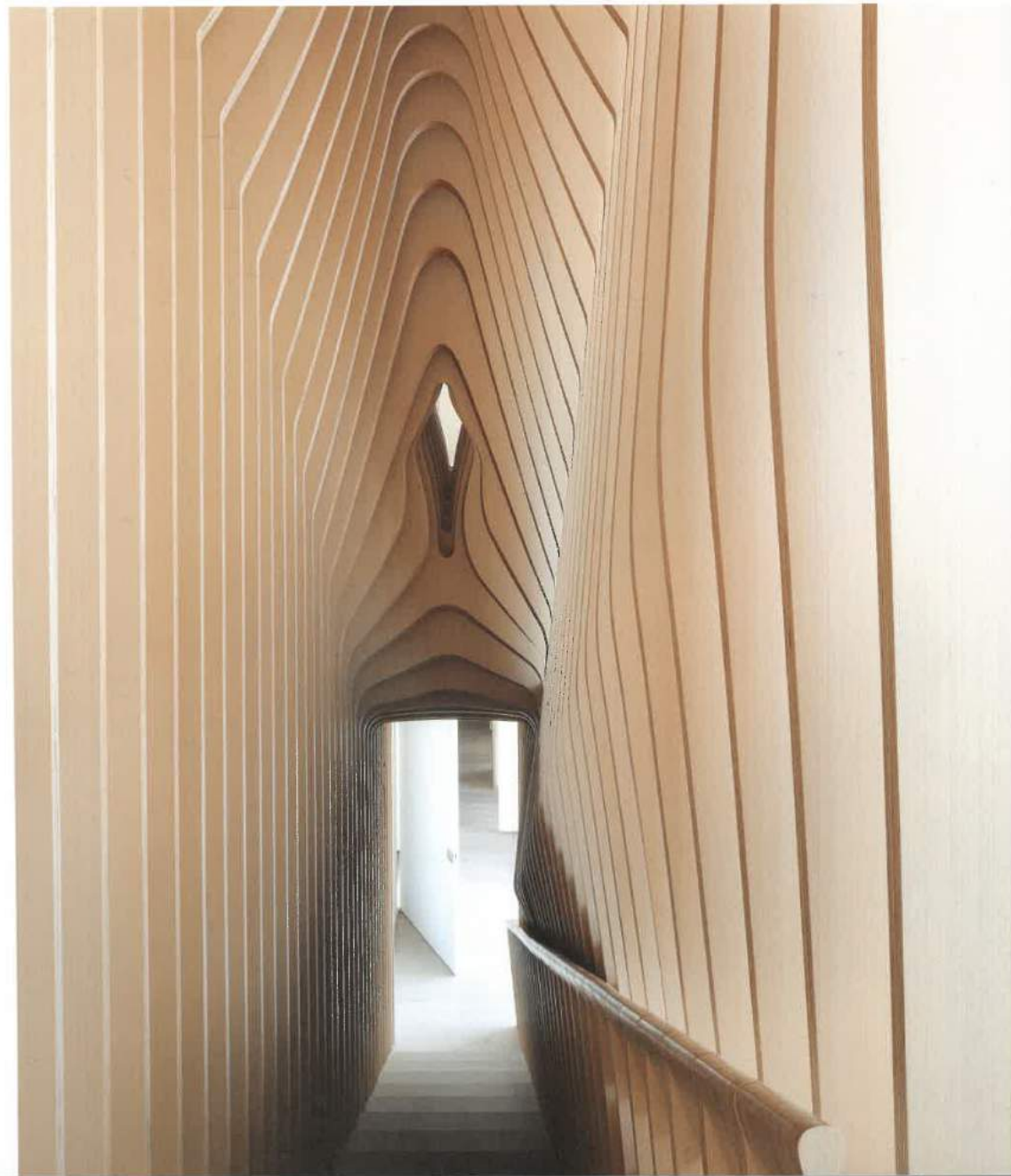
THE HOME UPGRADE

New Homes in
Remodeled Buildings

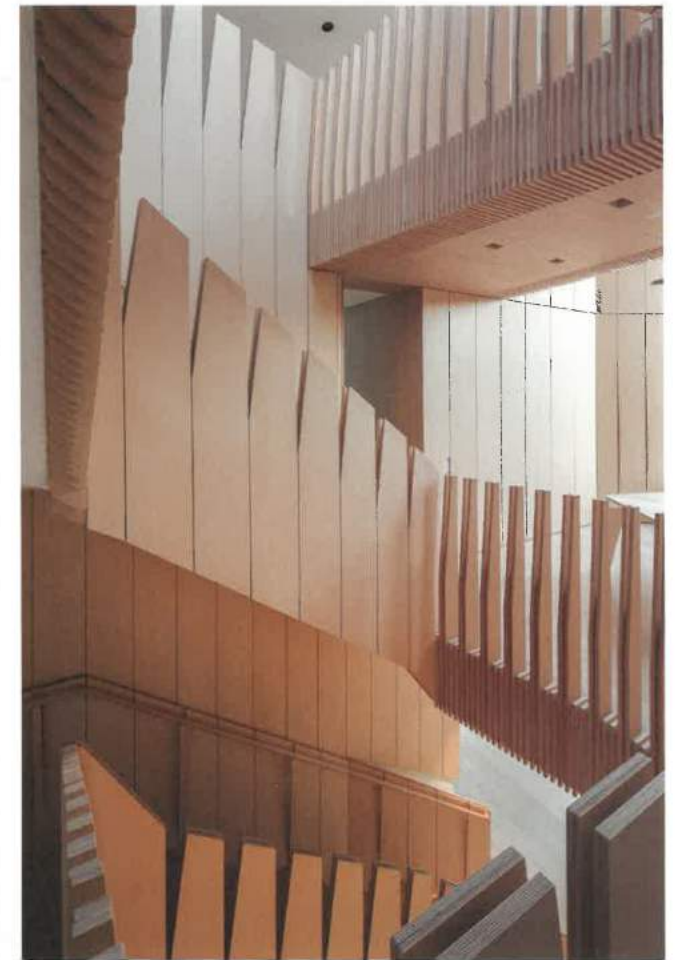


gestalten

Sculptural Interiors and a Brave New Architectural Order



PROJECT
ROCK CREEK HOUSE
DESIGNER
NADAAA
LOCATION
WASHINGTON DC, USA
BUILT
1920s



← The stairs to the basement
↑ The bold new exterior
↻ The sculptural central staircase

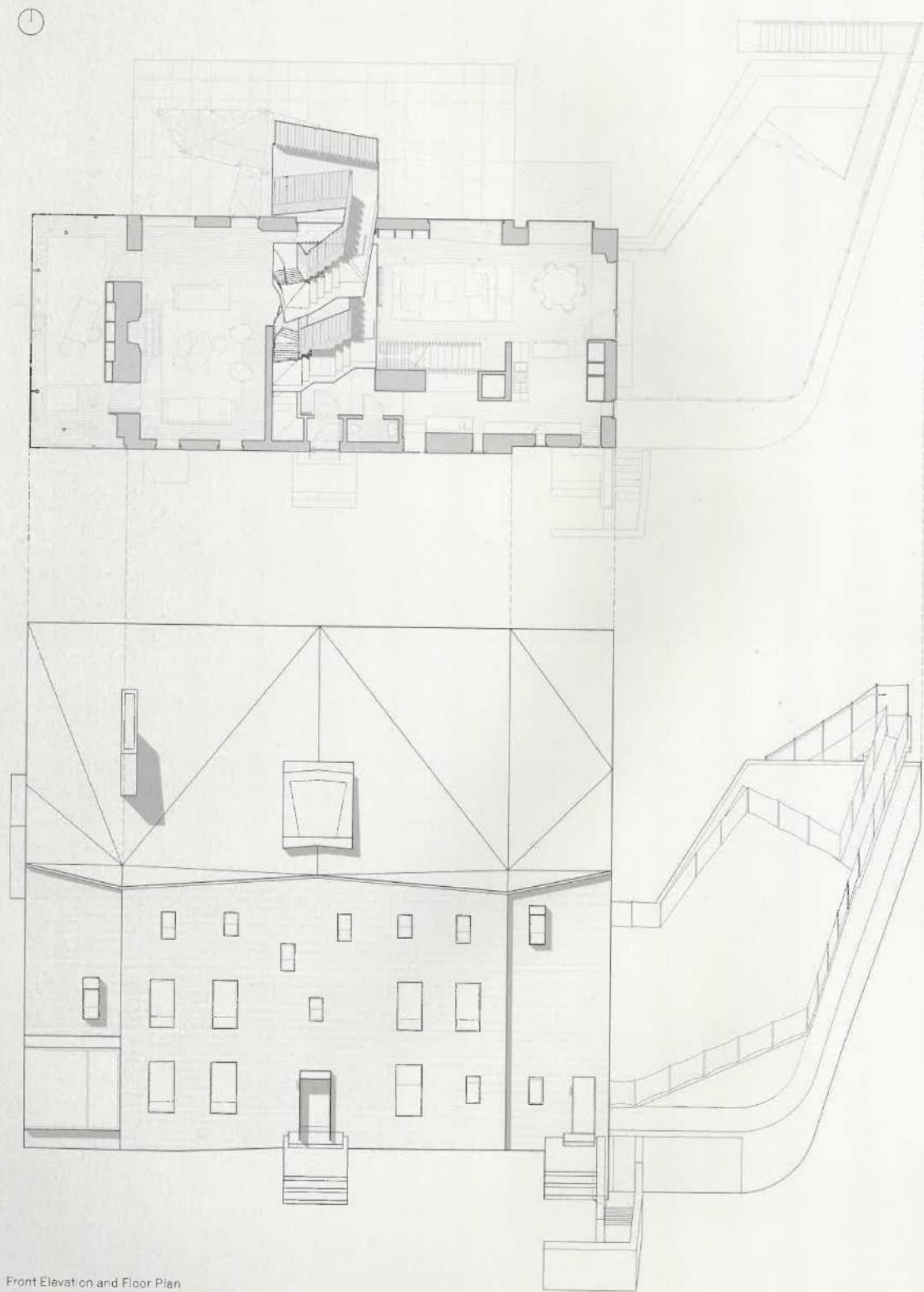
Punctuated with a formation of mismatched windows at different heights, this 1920s building has been reworked to create a more open and informal interior. "This renovation leveraged the connection with the landscape and the robustness of the existing structure to double the size of the house," says architecture firm NADAAA, which modified the Washington, DC, property for a family of five.

The brick structure was originally composed of two main floors, with a basement at garden level and an attic for storage. Two wood-veneered spaces now define the new layout: the first connects the entry level with a new living room overlooking the garden; the second links the entry with the attic, now a play loft. "With these two interventions, storage, bedrooms, work areas, and living areas are seamlessly intertwined," say the architects, who worked with CW Keller + Associates on the interior features, for which 3D modeling was used to develop the sculptural plywood structures. "The result is a new architectural order." —

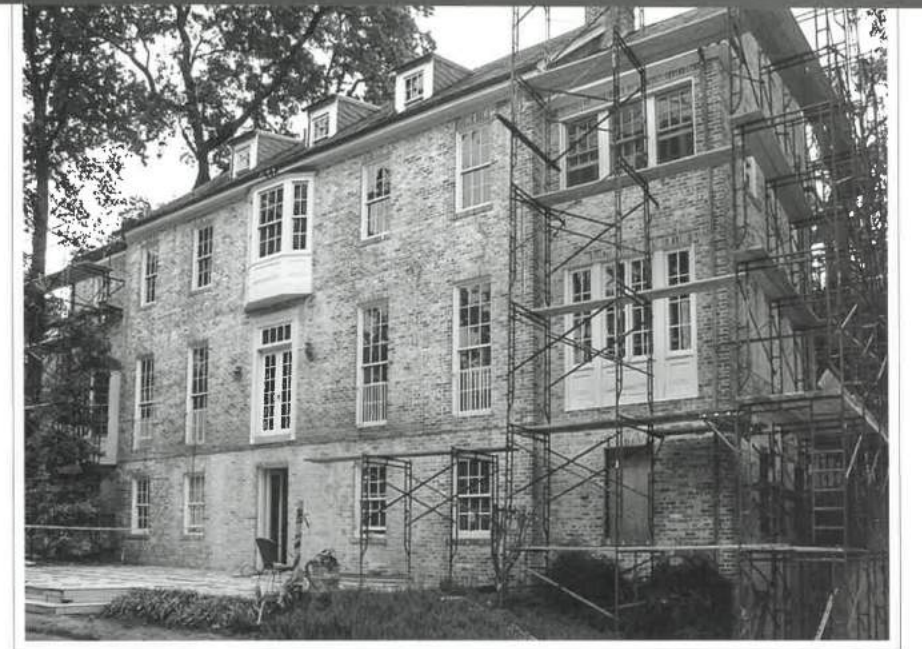
Two wood-veneered spaces now define the new layout: the first connects the entry level with a new living room overlooking the garden; the second links the entry with the attic, now a play loft.



← The living area overlooks the garden
 ↑ Concealed storage in a bedroom
 → A long, slender kitchen



Front Elevation and Floor Plan



→ The original 1920s exterior
 ↓ Mismatched windows in the new exterior

